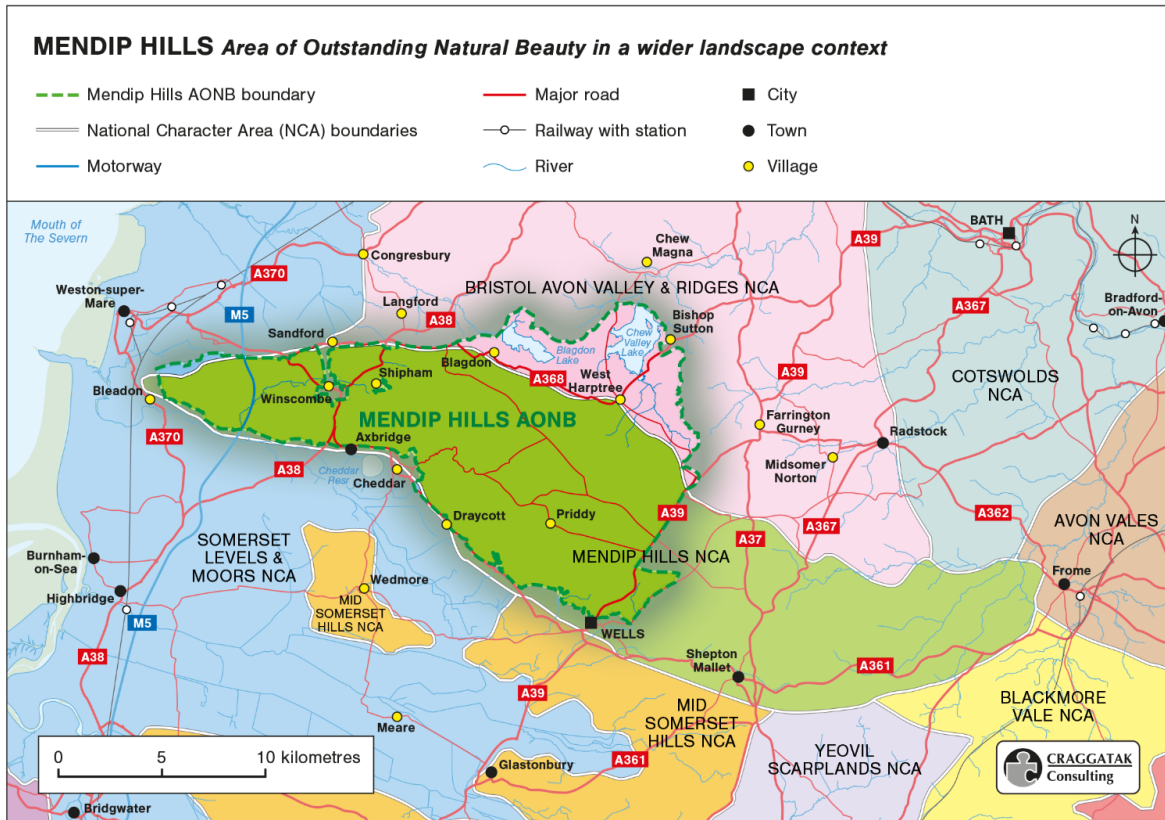




Mendip Hills National Landscape

The Mendip Hills National Landscape is one of England's most special places, designated as an Area of Outstanding Natural Beauty. The 198km² area just south of Bristol includes the beautiful low-lying land and lakes of the Chew Valley and the distinctive limestone Mendip Hills, which rise dramatically from the Somerset and North Somerset Levels.



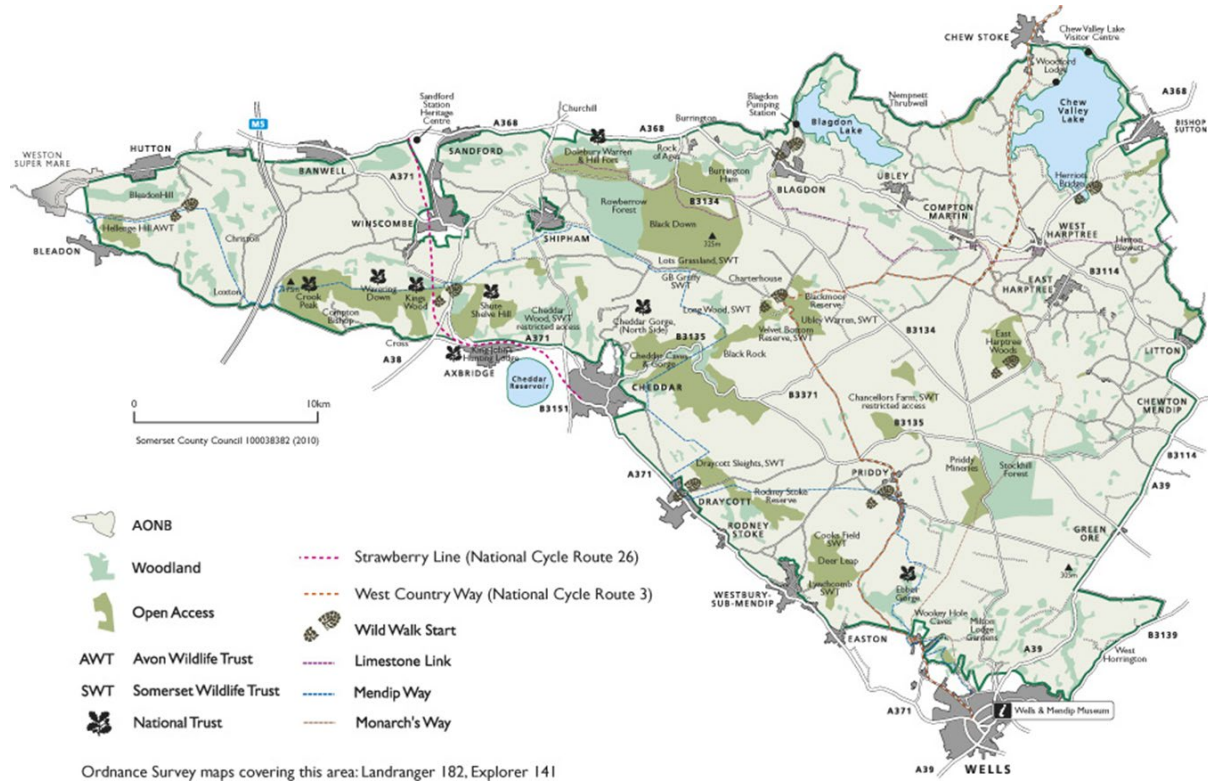
Contains public sector information licensed under the Open Government Licence v2.0.

The stunning landscape of steep slopes and undulating plateau, punctuated by spectacular gorges and rocky outcrops, spans from the edge of Weston-super-Mare in the west, to England's smallest city of Wells in the east. To highlight just how important this west to east corridor is for wildlife and people, a new Mendip 'super' National Nature Reserve (NNR) has just been declared (part of the King Charles III Series), which follows the 'golden thread' of The Mendip Way long distance recreational trail: <https://mendiphills-nl.org.uk/news/mendipnnr>.

On the hilltops there are fantastic views with hundreds of ancient monuments and over 400km of drystone walls, whilst the southern flower-rich grassland slopes and the northern wooded combs offer a wide variety of important habitats and wildlife.

A new Nature Recovery Plan for the Mendip Hills sets this out in more detail and highlights 8 'Champion Species' to focus on: adder, black oil beetle, Cheddar pink, greater horseshoe bat, hazel dormouse, skylark, small pearl bordered fritillary butterfly, and water vole. What makes these 'champions'? They are all threatened and vulnerable, they are all good indicators of wider habitat health, and they are all conversation-starters! Find out more here: <https://mendiphills-nl.org.uk/caring-about-the-aonb/nature-recovery-plan>.

There are 12 ‘Special Qualities’ that create the Mendip Hills sense of place, character and identity; these can be viewed at: <https://mendiphills-nl.org.uk/exploring/special-qualities>. Geology underpins these Special Qualities and the habitats and species of the Mendip Hills, as well as the adventurous types of recreation that take place here, from caving to rock climbing.



The Mendip Hills National Landscape is a farmed landscape with many nature reserves, overseen by a wide partnership of organisations, supported and coordinated by the Mendip Hills National Landscape Team. The Team is in place to conserve and enhance the National Landscape – providing advice and aiming to deliver inclusive activities and projects, which promote sustainability and a connection to the landscape and nature for a diverse audience. The ‘Nature Calling’ project is a key workstream.

The Mendip Hills National Landscape Team has partnered with Super Culture, who will act as the local producing organisation for the project. Super Culture specialise in creative placemaking and community participation – they are well-embedded into local communities and produce ambitious, diverse work with, for and by the people of Weston-super-Mare and North Somerset: <https://superculture.org.uk>. Nature Calling will build on the impetus created by some of the excellent green initiatives that already exist in Weston, including community allotments, urban growing projects, park-based creative activity, arts and health walks, and more.

A project advisory group has been established to help steer the project locally. Members of this group include North Somerset Council, Weston Town Council, West of England Nature Partnership (nature & health), Alliance Homes, local community members, creatives, and youth workers.

Whist the end product should engage a wide audience, the project should focus on inspiring and engaging young people in the South Ward (Bournville, Oldmixon, and Coronation) of Weston-super-Mare (a Priority Place for Arts Council England on the western edge of the National Landscape and the Mendip NNR) and aim to promote some or all of the Mendip Hills' Champion Species and Special Qualities (for example, the importance / influence of geology).

Please view / download the Visitor Guide for more information and an additional map of the area: [https://mendiphills-nl.org.uk/wp-content/uploads/2022/11/Mendip-Hills-Visitor-](https://mendiphills-nl.org.uk/wp-content/uploads/2022/11/Mendip-Hills-Visitor-2022_11_04.pdf)

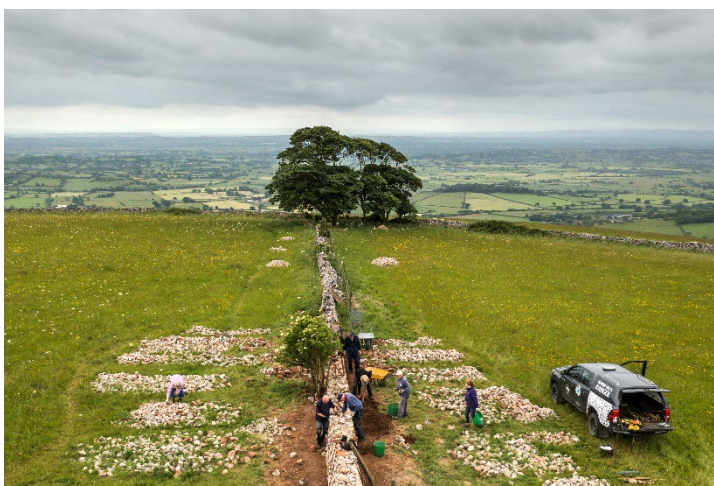


Views from Crook Peak © Paul Box / Mendip Hills National Landscape Team

[Guide-2022_11_04.pdf](#)



Recent public photography projections project in Cheddar Gorge (1,300 attendees) © Elizabeth Woodger



Drystone wall on south-facing slope with views across the Levels © Paul Box / Mendip Hills National Landscape Team



Organic farmer on the Mendip Hills with Ruby Red cattle © Paul Box / Mendip Hills National Landscape Team



Foraging Walk, Arts & Health Weekender 2023 in Weston-super-Mare © Paul Blakemore