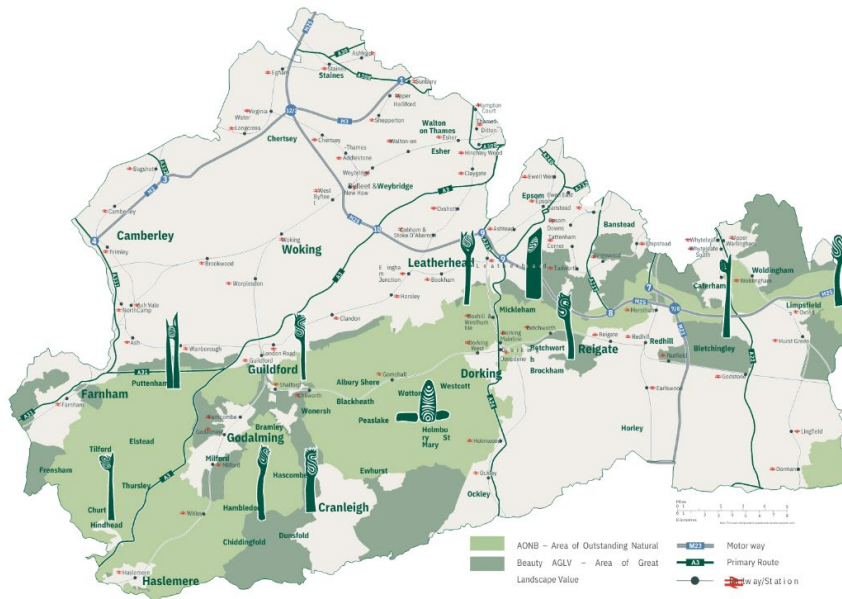




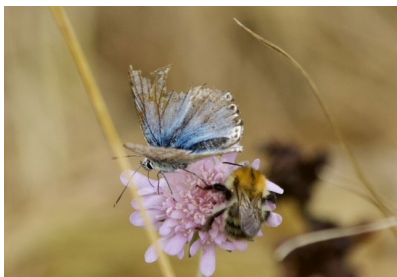
Surrey Hills National Landscape

The Surrey Hills was one of the first landscapes to be designated an Area of Outstanding Natural Beauty (now referred to as National Landscapes) in 1958. It stretches across rural Surrey, covering about a quarter of the county.

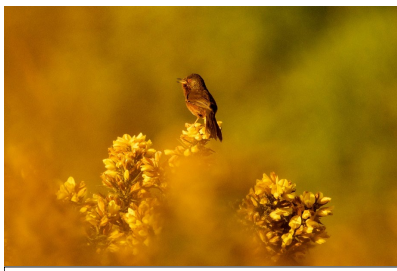
Spanning Surrey from east to west, the Surrey Hills features a mosaic of habitat such as chalk grassland, heathland, and woodland, with Surrey being the most wooded county in England. The Surrey Hills provides outstanding natural beauty on London’s doorstep.



This National Landscape links together a chain of varied lowland landscapes including the North Downs. Rising near Guildford as the narrow Hogs Back, the ridge of the downs stretches away to the Kent border, an unmistakable chalk landscape of swelling hills and beech-wooded combes with a steep scarp crest looking south to the Weald. The downs are paralleled to the south by an undulating wooded greensand ridge, rising at Leith Hill to southeast England’s highest point (294m). In the west, sandy open heathland stretches away to the Hampshire border.



Butterfly & Bumblebee, Gordon Jackson



Dartford Warbler, Mark Crisp RSPB

The landscape is home to many iconic species such as the Nightjar, Dartford Warbler and Skylark which thrive on the varied habitat that the Surrey Hills offers. Careful management of the natural environment takes place by conservation bodies, landowners and farmers who have managed the land for generations. We regularly work with partners including the National Trust, Surrey Wildlife Trust, SCC Countryside, RSPB and others to fulfil our mission of protecting and enhancing the Surrey Hills.

The Surrey Hills is a popular day trip destination with railway links from London to certain locations while others are harder to reach by public transport. Heavily visited beauty spots such as Box Hill, Devils Punch Bowl and Newlands Corner have a multitude of footpaths, bridleways and long-distance trails including the North Downs Way National

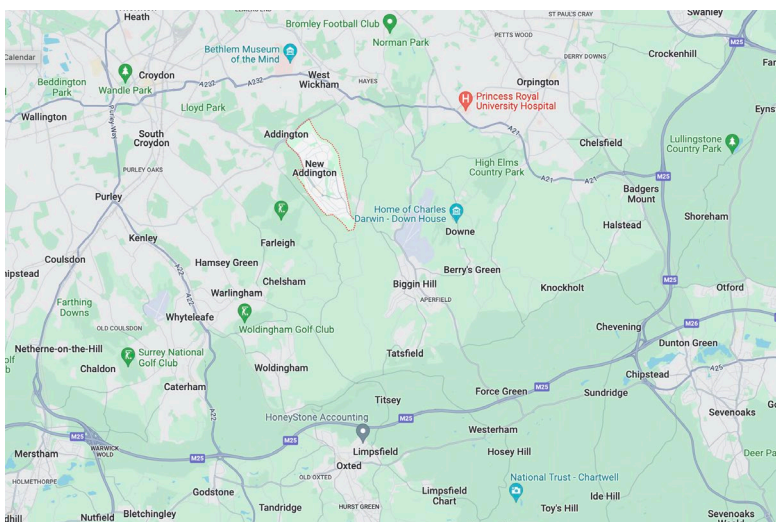
Trail. Vibrant towns such as Farnham, Guildford, Dorking, Reigate and Oxted alongside showpiece villages such as Shere and Abinger offer thriving locations for crafts, food and drink experiences and you can even enjoy our Vineyards of the Surrey Hills. For more information see www.surreyhills.org

The Surrey Hills team is made up of the Board, Surrey Hills Enterprises who support local producers, Surrey Hills Society who lead walks, talks and conservation activities and Surrey Hills Arts. Surrey Hills Arts is a partnership between the Surrey Hills National Landscape and Surrey Arts. We deliver inclusive contemporary arts projects that proactively build diverse audiences connecting to the history, geology & characteristics of the landscape. We advocate positive action and a greater understanding to environmental challenges through direct engagement in community settings. We seek to work with those who would not normally have the opportunity to access the landscape and creative activity to enable greater connection to nature and improved wellbeing. See www.surreyhillsarts.org

Nature Calling is one of our major projects specifically identifying individuals and communities in the London Borough of Croydon as a priority target area. London's largest borough, Croydon has a larger proportion than average from the global majorities, 54% of the population is non white British ethnicity. We are focusing our engagement on the New Addington community connecting with green spaces in Croydon and the Surrey Hills. We are committed to co-designing a programme with this diverse community particularly with young people and those with poor mental health. New Addington has a recording studio, community kitchen & garden and hosts an annual carnival which could be included in this project.

The Advisory Group for Nature Calling is formed of key partners and community members. Our initial approach is to spend time with different community groups listening to their views and ideas. We will be running some creative health walks to get to know people further. This will be an opportunity to learn about their local landscapes and respond to these creatively.

The selected artist or collective will need to demonstrate how they will overcome the challenges (or embrace the opportunities) of connecting a community located at a distance from the National Landscape. Themes could include journeying from urban to rural, celebrating nature in urban settings, a trail or movable artwork. Depending on applications received, Surrey Hills Arts may choose to appoint more than one artist/collective and divide the fee accordingly. We are open to showcasing the resulting commission in both Croydon and the Surrey Hills depending on how the project evolves.



Map showing New Addington in relation to the Surrey Hills locations of Tatsfield, Woldingham and Oxted.



Puttenham Common



Leith Hill



Inspiring View 'Coccolith', Titsey Estate (East Surrey Hills)